

Caratteristiche tecniche - Libreria modulare con mensole realizzate in massello di noce americano o frassino. Base, anelli strutturali, separatori e piastrelle di connessione in acciaio nichelato nelle finiture nero, oro, oro rosa e bronzato.

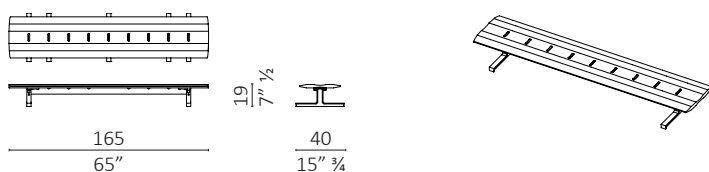
Technical features - Modular bookcase with shelves made in solid American walnut or ash. Base, structural and bookstop rings and connection plates in nickel steel finished black, gold, rose gold and bronzed.

Nota - La libreria Flying Circles deve avere il primo ripiano partendo dal basso dotato di 3 anelli grandi e nei ripiani superiori proseguire alternando 2 e 3 anelli grandi. Gli anelli grandi sono strutturali, mentre gli anelli piccoli, possono non essere inseriti. Se posizionata al centro della stanza sono necessarie 2 aste di ancoraggio a soffitto per ogni modulo, non comprese nel prezzo della libreria. Si prega di comunicare l'altezza pavimento/soffitto.

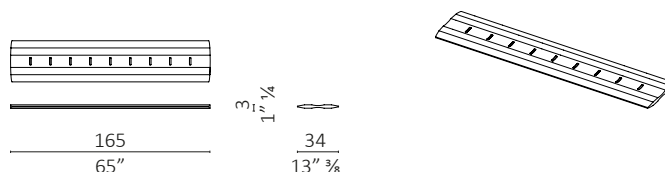
Note - The bookcase Flying Circles must have the 1st shelf from the bottom with 3 large rings and alternate 2 and 3 large rings in the other shelves. Large rings are structural, while small rings may not be selected (not structural). When the bookcase Flying Circles is positioned in the center of the room, are necessary 2 ceiling anchorage rods for each module, to be added in the library price. Please communicate height floor / ceiling.



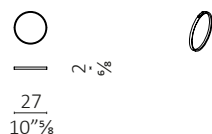
Flying Circles mensola e basamento / shelf and base



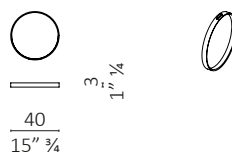
Flying Circles mensola / shelf



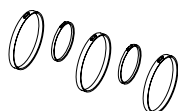
Flying Circles cerchio piccolo / small ring



Flying Circles cerchio grande / large ring



Flying Circles set cerchi 3 G-2 P / set rings 3L-2S



Flying Circles set cerchi 2 G-2 P / set rings 2L-2S



Accessori / Accessories

Flying Circles fissaggi a soffitto / ceiling anchorage

Caratteristiche tecniche - Tubo telescopico per ancoraggio a soffitto con dimensione variabile: da un minimo di 15 cm a un massimo di 50 cm.

Technical features - Ceiling telescopic anchorage rod, variable dimension: from minimum 15 cm to maximum 50 cm.

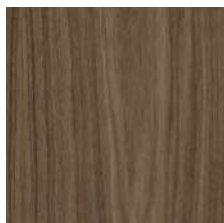
Nota - Sono necessarie 2 aste di ancoraggio per ogni modulo.

Note - 2 anchorage rods for each module are necessary.

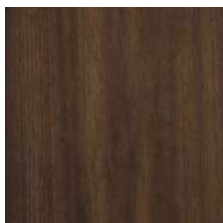


Finiture / Finishes

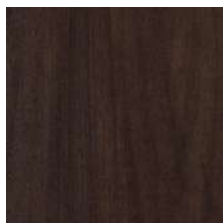
Legno Noce / Wood Walnut



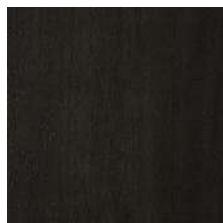
Noce
Walnut



Noce dark
Walnut dark

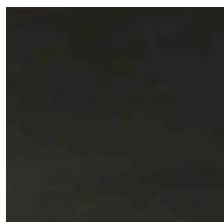


Noce moka
Walnut moka

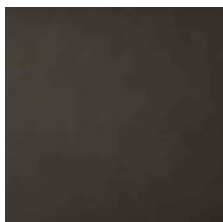


Noce brown
Walnut brown

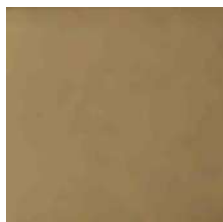
Metallo Acciaio nichelato / Metal Nickel steel



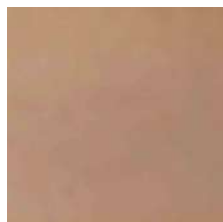
Finitura Nickel Nero
Black nickel finish



Finitura Bronzo
Bronzed finish



Finitura oro
Gold finish



Finitura oro rosa
Rose Gold finish