

Large Flower

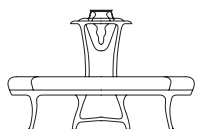
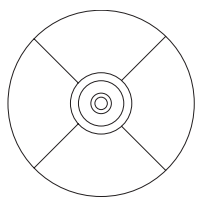
design Roberto Lazzeroni

Caratteristiche tecniche - Divano rotondo realizzato in massello di noce americano. Seduta in multistrato imbottita. Portavaso centrale in legno con supporto in ottone brunito e vasi in vetro soffiato trasparente. Piedini in ottone brunito.

Technical features - Round sofa made in solid American walnut. Seat in upholstered plywood. Central wooden vase holder with burnished brass bracket and transparent blown glass vases. Leg tips in burnished brass.

Nota - Le irregolarità dei vasi sono da considerarsi pregi di lavorazione.

Note - Irregular finishes of the glass vases are to be considered as natural characteristics of the product.



45
17" ³/₄

100
39" ³/₈

51
20" ¹/₈

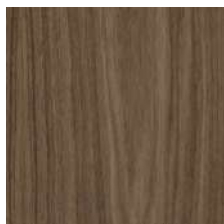
154
60" ⁵/₈

c.o.m. (l.mt.4,00/sq.mt.6,50)

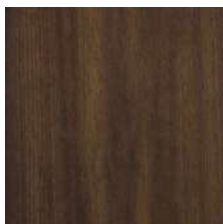
volume m³ 2,902 - **kg.** 67,5

Finiture / Finishes

Legno Noce / Wood Walnut



Noce
Walnut



Noce dark
Walnut dark



Noce moka
Walnut moka



Noce brown
Walnut brown

Finiture / Finishes

Tessuto Velluti e Ciniglie / Fabric Velvet and Chenille



Belsuede-029



Belsuede-032



Belsuede-015



Belsuede-014



Belsuede-01



Belsuede-036



Belsuede-016



Belsuede-017



Belsuede-040



Belesuede-034



Belsuede-010



Belsuede-011



Belsuede-012



Belsuede-039



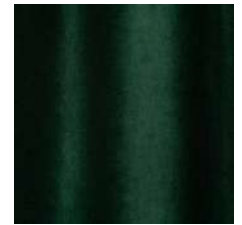
Amazonie-041



Amazonie-042



Amazonie 002



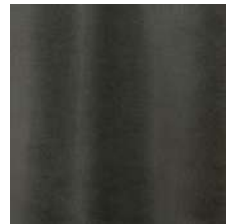
Amazonie 022



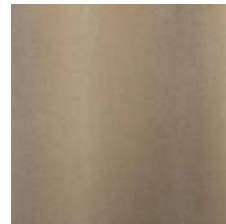
Amazonie 025



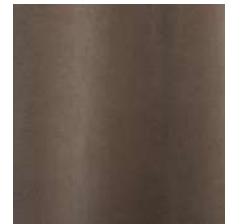
Amazonie 045



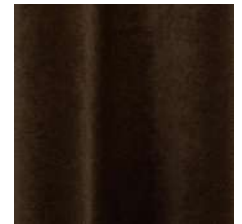
Amazonie 040



Amazonie 043



Amazonie 036



Amazonie 038



Amazonie 037



Amazonie 035

Tessuto / Fabric Bouclé



Verone Creme



Monza 00



Mies-005



Monza 09



Mies-004



Monza 07

Finiture / Finishes

Tessuto / Fabric Bouclé



Monza 97



Monza 84



Monza 58



Monza 27



Monza 48



Monza 45



Verone Nuit



Mies-020

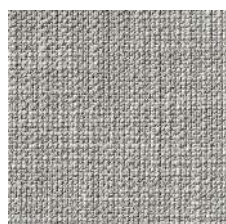


Monza 88

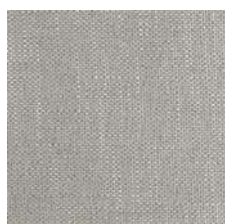


Mies-008

Tessuto Vari / Fabric Various



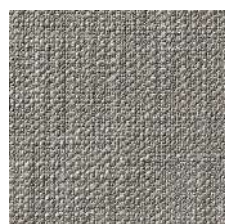
Gypsy-892



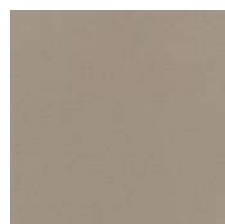
Flair-108



Nyul 001



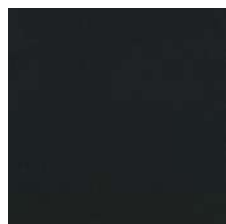
Gypsy-895



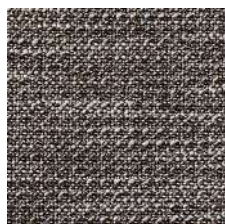
Divina 3 224



Oxford-893



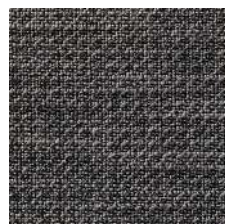
Divina 3-191



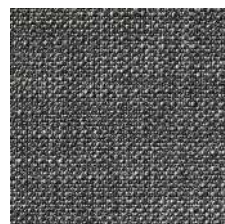
Oxford-897



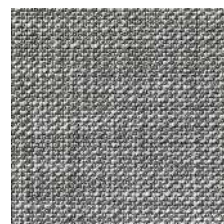
Flair-121



Oxford-999



Gypsy-997



Gypsy-995



Nyul 002



Nyul 003



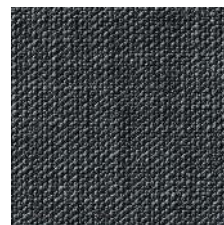
Flair 166



Oxford-889



Flair-164



Gypsy-699



Nyul 004



HURLUBERLU 003



HURLUBERLU 004

Finiture / Finishes

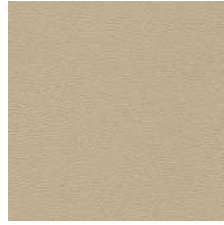
Pelle / Leather Color Sphere PF



SC 06 Calicot



SC 23 Tortora



SC 32 Caolino



SC 51 Panna



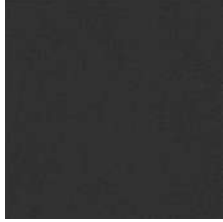
SC 31 Quarzo Fumè



SC 34 Maggese



SC 26 Topo



SC 20 Inchiostro



SC 21 Amianto



SC 53 Creta



SC 55 Camel Hair



SC 52 Daino



SC 66 India



SC 59 Noce di Pecan



SC 80 Bruno Havana



SC 29 Ardesia



SC 148 Lacca



SC 146 Coccio Pesto



SC 173 Glauco



SC 177 Limo



SC 178 Alpi



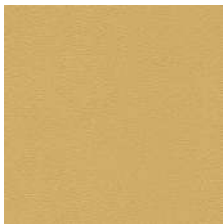
SC 254 Steel Blue



SC 278 Atlantic Blue



SC 279 Alchemy

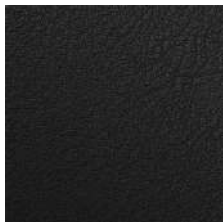


SC 133 Paglierino

PELLE SUPERIOR / SUPERIOR LEATHER



201 Testa di moro



202 Antracite



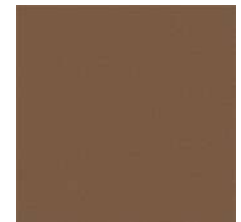
204 Fango



Velvety - Black Pepper



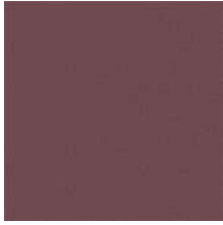
Velvety - Clary Sage



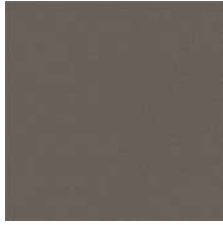
Velvety - Cumin

Finiture / Finishes

PELLE SUPERIOR / SUPERIOR LEATHER



Velvety - Deep
Lavender



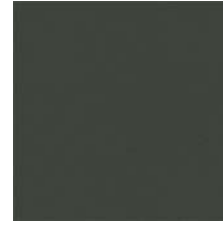
Velvety - Grey Salt



Velvety - Juniper



Velvety - Paprika



Velvety - Rosemary



Velvety - Saffron



Velvety - Sesame