

Twenty Two

design Jaime Hayon

Caratteristiche tecniche - Poltrona realizzata in massello di noce americano o acero. Seduta e schienale imbottiti.

Technical features - Armchair made in solid American walnut or maple wood. Upholstered seat and back-rest.

Nota - Il vassoio sotto seduta è sempre rivestito in pelle.

Note - The under seat tray is always covered in leather.



89
35"



40
15" 3/4

61
24"

57
22" 1/2

67
26" 3/8

94
37"

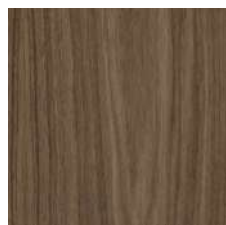
84
33" 1/8

c.o.m. (l.mt.2,80/sq.mt.5,00)

volume m³ 1,448 - **kg.** 52,5

Finiture / Finishes

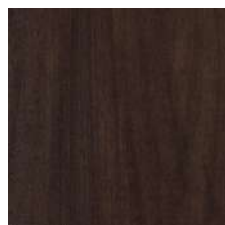
Legno Noce / Wood Walnut



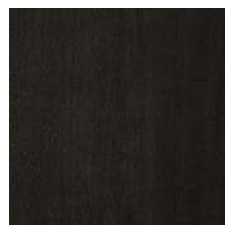
Noce
Walnut



Noce dark
Walnut dark



Noce moka
Walnut moka



Noce brown
Walnut brown

Finiture / Finishes

Legno Acero / Wood Maple



Acero
Maple

Tessuto Velluti e Ciniglie / Fabric Velvet and Chenille



Belsuede-029



Belsuede-032



Belsuede-015



Belsuede-014



Belsuede-01



Belsuede-036



Belsuede-016



Belsuede-017



Belsuede-040



Belsuede-034



Belsuede-010



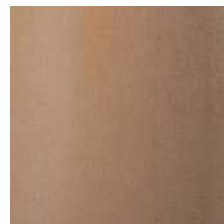
Belsuede-011



Belsuede-012



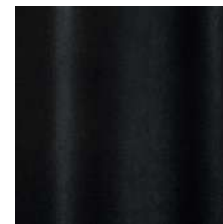
Belsuede-039



Amazonie-041



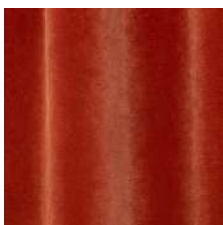
Amazonie-042



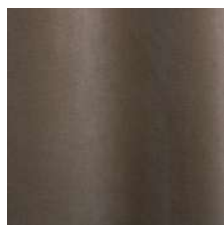
Amazonie 002



Amazonie 022



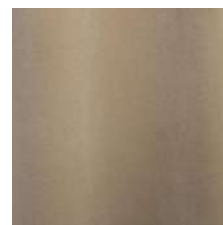
Amazonie 025



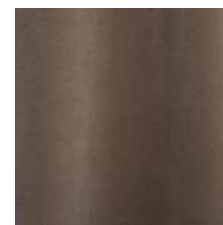
Amazonie 045



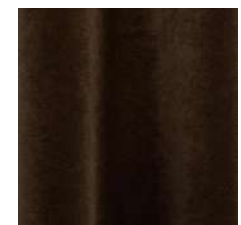
Amazonie 040



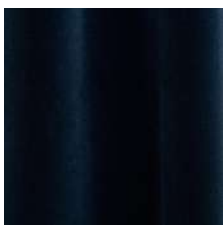
Amazonie 043



Amazonie 036



Amazonie 038



Amazonie 037



Amazonie 035

Finiture / Finishes

Tessuto / Fabric Bouclé



Verone Creme



Monza 00



Mies-005



Monza 09



Mies-004



Monza 07



Monza 97



Monza 84



Monza 58



Monza 27



Monza 48



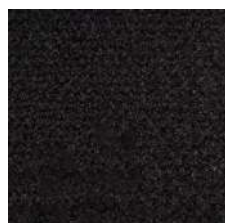
Monza 45



Verone Nuit



Mies-020

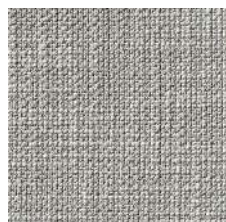


Monza 88



Mies-008

Tessuto Vari / Fabric Various



Gypsy-892



Flair-108



Nyul 001



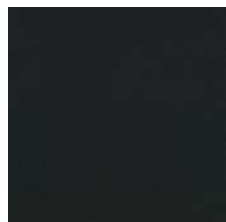
Gypsy-895



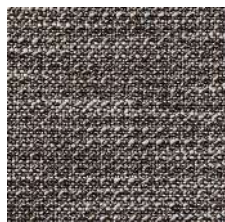
Divina 3 224



Oxford-893



Divina 3-191



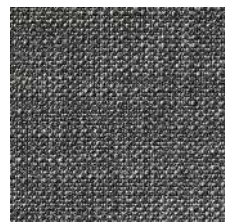
Oxford-897



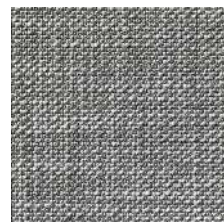
Flair-121



Oxford-999



Gypsy-997



Gypsy-995



Nyul 002



Nyul 003



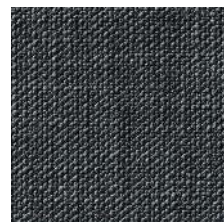
Flair 166



Oxford-889



Flair-164



Gypsy-699

Finiture / Finishes

Tessuto Vari / Fabric Various



Nylul 004



HURLUBERLU 003



HURLUBERLU 004

Pelle / Leather Color Sphere PF



SC 06 Calicot



SC 23 Tortora



SC 32 Caolino



SC 51 Panna



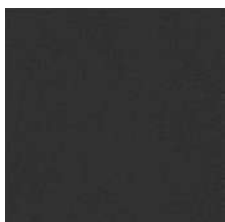
SC 31 Quarzo Fumè



SC 34 Maggese



SC 26 Topo



SC 20 Inchiostro



SC 21 Amianto



SC 53 Creta



SC 55 Camel Hair



SC 52 Daino



SC 66 India



SC 59 Noce di Pecan



SC 80 Bruno Havana



SC 29 Ardesia



SC 148 Lacca



SC 146 Coccio Pesto



SC 173 Glauco



SC 177 Limo



SC 178 Alpi



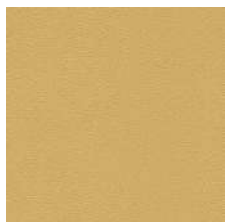
SC 254 Steel Blue



SC 278 Atlantic Blue



SC 279 Alchemy



SC 133 Paglierino

Finiture / Finishes

PELLE SUPERIOR / SUPERIOR LEATHER



201 Testa di moro



202 Antracite



204 Fango



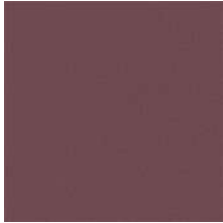
Velvety - Black Pepper



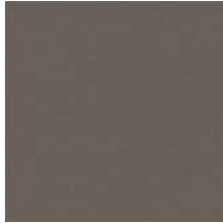
Velvety - Clary Sage



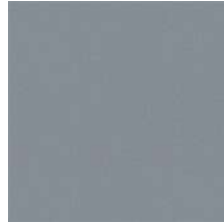
Velvety - Cumin



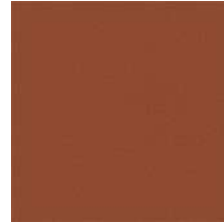
Velvety - Deep
Lavender



Velvety - Grey Salt



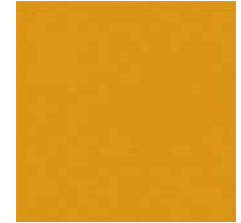
Velvety - Juniper



Velvety - Paprika



Velvety - Rosemary



Velvety - Saffron



Velvety - Sesame