

After Glow

design Vincenzo De Cotiis

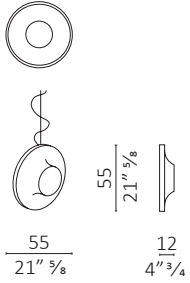
Caratteristiche tecniche - Lampada da soffitto e da terra con corpo luminoso in ottone brunito o spazzolato e vetro temperato. Lampada da terra con stelo tubolare in ottone. Luce a led (3000K).

Technical features - Ceiling and floor lamp with lighting body in burnished or brushed brass and tempered glass. Floor lamp with tubular stem in brass. Led light (3000K).

Nota - Specificare il paese di destinazione delle lampade. La versione After Glow T su richiesta può essere dimmerabile con una maggiorazione sul prezzo del 3%. La lampada After Glow T versione dimmerabile non è certificata UL.

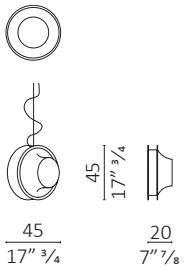
Note - Specify country of destination of lamps. On request After Glow T can be dimmerable with an increase of 3% on the price list standard version. After Glow T lamp dimmerable version is not certified UL.

After Glow P



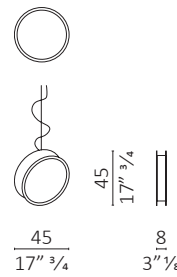
volume m³ 0,189 - kg. 16,5

After Glow N



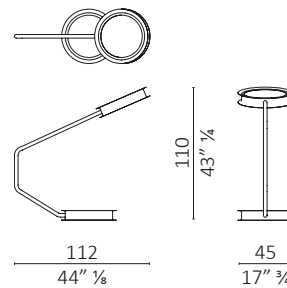
volume m³ 0,146 - kg. 20

After Glow C

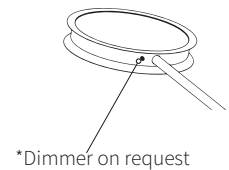


volume m³ 0,120 - kg. 13,5

After Glow T



volume m³ 1,097 - kg. 54

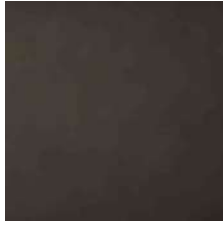


Finiture / *Finishes*

Metallo Ottone / *Metal Brass*



Ottone spazzolato
Brushed brass



Ottone brunito
Burnished brass