

# Iconest

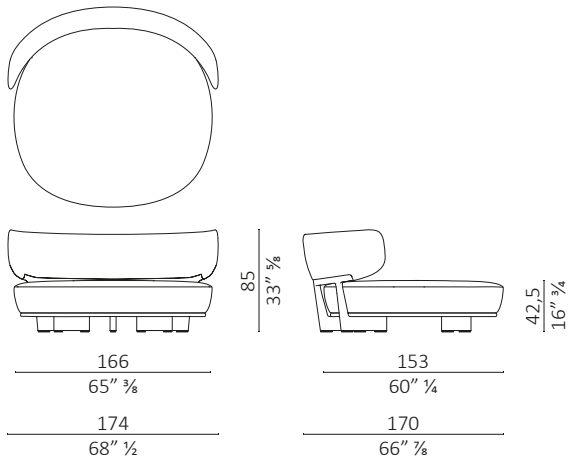
design Roberto Lazzeroni

**Caratteristiche tecniche** - Love seat con struttura realizzata in massello di noce americano. Seduta e schienale in multistrato di pioppo, imbottiti. Piedini in ottone.

**Technical features** - Love sofa made in solid American walnut. Body in upholstered poplar plywood. Leg tips in brass.

**Nota** - Specificare la finitura del legno, tra quelle presenti a campionario.

**Note** - Specify the wood finish from the available samples.



c.o.m. (l.mt.7,50/sq.mt.14,00)

## Finiture / Finishes

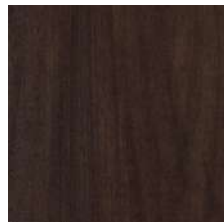
### Legno Noce / Wood Walnut



noce  
walnut



noce dark  
walnut dark



noce moka  
walnut moka



noce brown  
walnut brown

## Finiture / Finishes

### Tessuto Velluti e Ciniglie / Fabric Velvet and Chenille

---



Belsuede-029



Belsuede-032



Belsuede-015



Belsuede-014



Belsuede-01



Belsuede-036



Belsuede-016



Belsuede-017



Belsuede-040



Belesuede-034



Belsuede-010



Belsuede-011



Belsuede-012



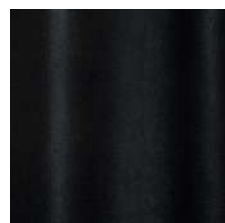
Belsuede-039



Amazonie-041



Amazonie-042



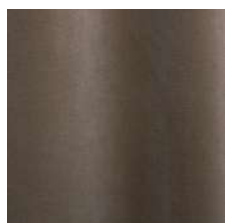
Amazonie 002



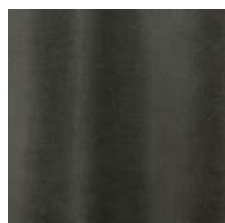
Amazonie 022



Amazonie 025



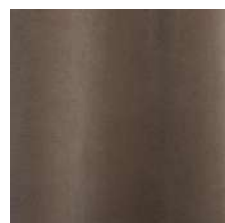
Amazonie 045



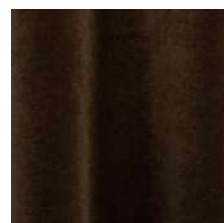
Amazonie 040



Amazonie 043



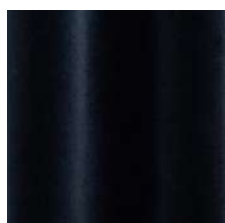
Amazonie 036



Amazonie 038



Amazonie 037



Amazonie 035

### Tessuto / Fabric Bouclé

---



Verone Creme



Monza 00



Mies-005



Monza 09



Mies-004



Monza 07

## Finiture / Finishes

### Tessuto / Fabric Bouclé

---



Monza 97



Monza 84



Monza 58



Monza 27



Monza 48



Monza 45



Verone Nuit



Mies-020



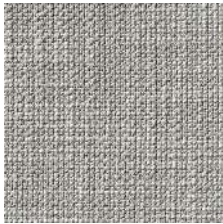
Monza 88



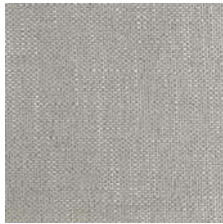
Mies-008

### Tessuto Vari / Fabric Various

---



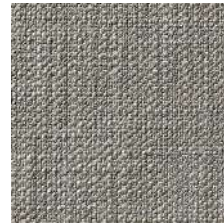
Gypsy-892



Flair-108



Nyul 001



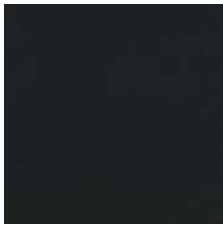
Gypsy-895



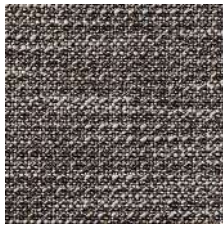
Divina 3 224



Oxford-893



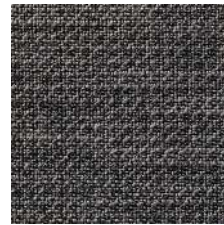
Divina 3-191



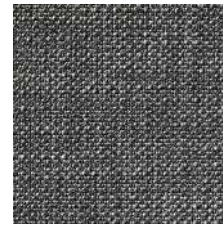
Oxford-897



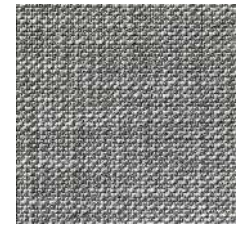
Flair-121



Oxford-999



Gypsy-997



Gypsy-995



Nyul 002



Nyul 003



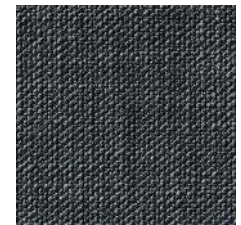
Flair 166



Oxford-889



Flair-164



Gypsy-699



Nyul 004



HURLUBERLU 003



HURLUBERLU 004

## Finiture / Finishes

### Pelle / Leather Color Sphere PF

---



SC 06 Calicot



SC 23 Tortora



SC 32 Caolino



SC 51 Panna



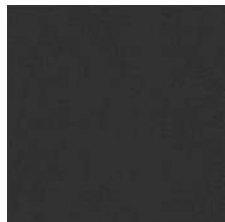
SC 31 Quarzo Fumè



SC 34 Maggese



SC 26 Topo



SC 20 Inchiostro



SC 21 Amianto



SC 53 Creta



SC 55 Camel Hair



SC 52 Daino



SC 66 India



SC 59 Noce di Pecan



SC 80 Bruno Havana



SC 29 Ardesia



SC 148 Lacca



SC 146 Coccio Pesto



SC 173 Glauco



SC 177 Limo



SC 178 Alpi



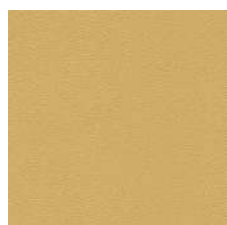
SC 254 Steel Blue



SC 278 Atlantic Blue



SC 279 Alchemy



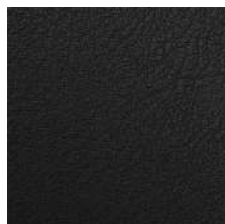
SC 133 Paglierino

### PELLE SUPERIOR / SUPERIOR LEATHER

---



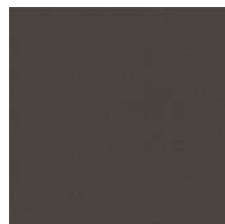
201 Testa di moro



202 Antracite



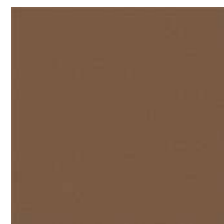
204 Fango



Velvety - Black Pepper



Velvety - Clary Sage

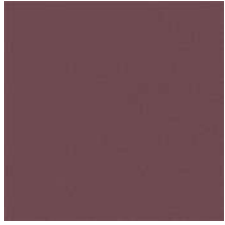


Velvety - Cumin

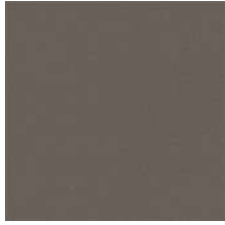
## Finiture / Finishes

### PELLE SUPERIOR / SUPERIOR LEATHER

---



Velvety - Deep  
Lavender



Velvety - Grey Salt



Velvety - Juniper



Velvety - Paprika



Velvety - Rosemary



Velvety - Saffron



Velvety - Sesame